

Formal Dress Code

#1

Dresses may not be cut below the bust line. The bust continues around your sides directly under the armpit. With arms down at your side, if flesh touches flesh below the bust line, the dress is inappropriate.



This dress meets dress code.

BUST LINE

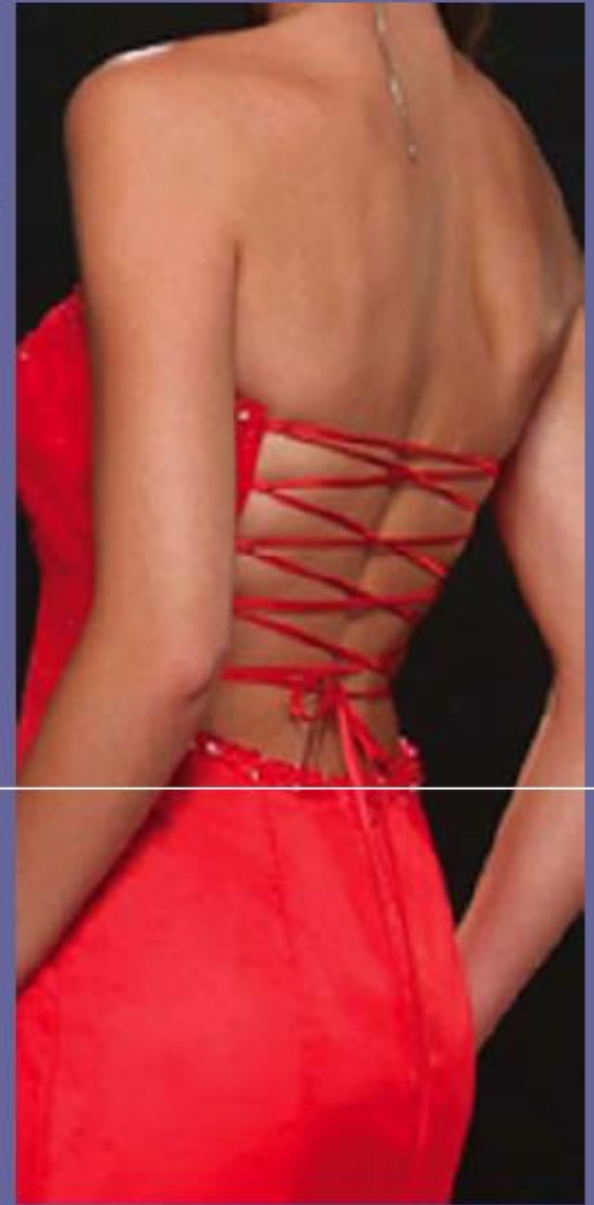
BUST LINE (on the side)

UNACCEPTABLE DRESSES



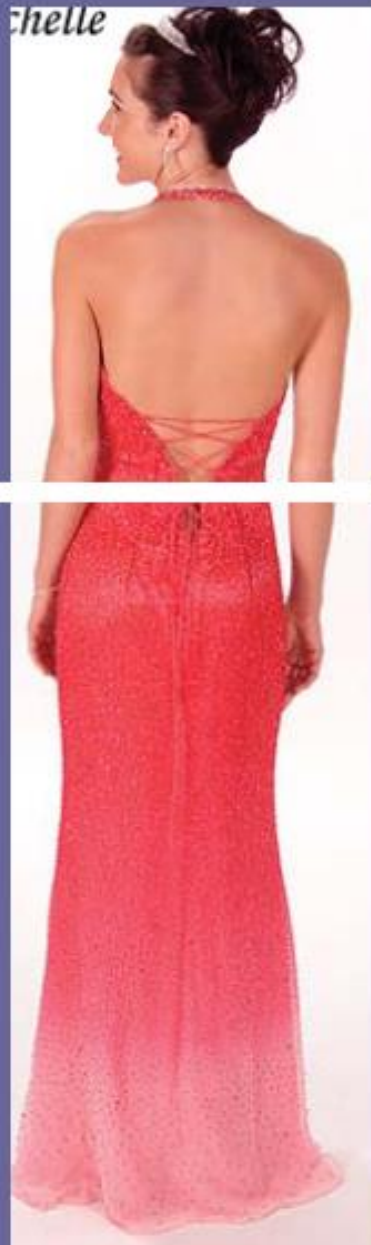
#2

Dresses may be backless as long as they are not cut below the naval.



This dress meets dress code. Please notice how the bust is covered on the sides.

UNACCEPTABLE DRESSES



#3

Midriffs will not be exposed.

This includes both front and side.

With arms down at your side, if flesh touches flesh in the midriff section the dress is inappropriate.

Midriff section

This dress meets dress code.



UNACCEPTABLE DRESSES



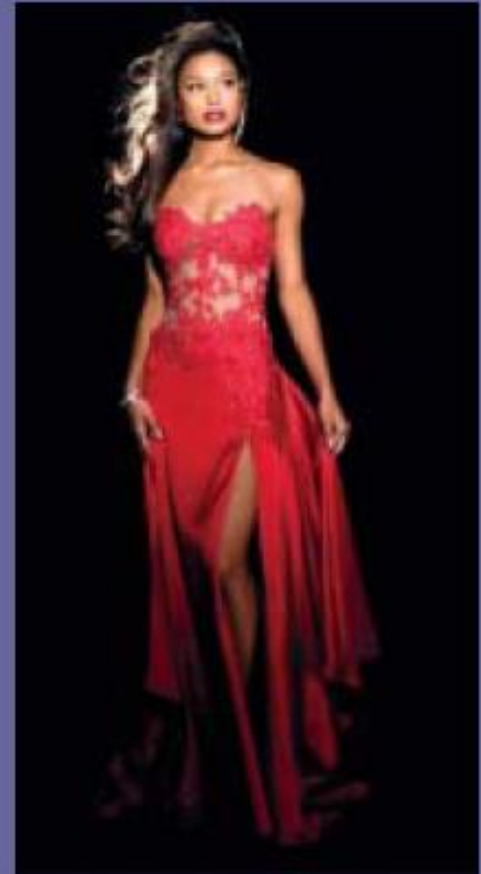
#4

Dresses may not have a slit that exceeds mid-thigh. This is fingertip length.

This dress meets dress code.



UNACCEPTABLE DRESSES



#5

Dresses must be no more than 6 inches from the floor when the student is on her knees.

Yes



No



UNACCEPTABLE DRESSES



This dress does not meet dress code.

EVEN if there is lace or sheer fabric to the floor, the exposed area must be in dress code.



#6

No tight dresses



#7

No mesh/lace with nude colored fabric is allowed to cover midriff or bust. Dresses may not be made of nude colored fabric/lace.



While we will be reasonable in our interpretation of these guidelines, we want you to know that you will not be allowed into the dance if you are dressed inappropriately.

Most importantly, this dress code does not limit your ability to show your style and uniqueness.

There are many beautiful and stylish dresses that do meet dress code.

